



Commercial

# HALE LANE, EDGWARE

PCM

# £850 PCM

### FEATURES

- Bright & natural light
- Close to shops
- Parking on private driveway
- Separate W.C. with sink



# 0 Bedroom Commercial located in Edgware

Location: The building is located behind Hale Lane on Greencroft HA8, conveniently situated near Hale Lane shops, approx. mid-way between Mill Hill & Edgware Town Centres.

Description: Bright ground floor office space offering excellent natural light, 24-hour access. Tenants benefit from a separate toilet and on-site parking.

Currently being refurbished, we welcome tenants to come and make their suggestions for decoration.

Price to include heating, water, electricity and possibly wi-fi.

Dimensions are 19.45 Sqm approx. which is roughly 209 Sqft approx.

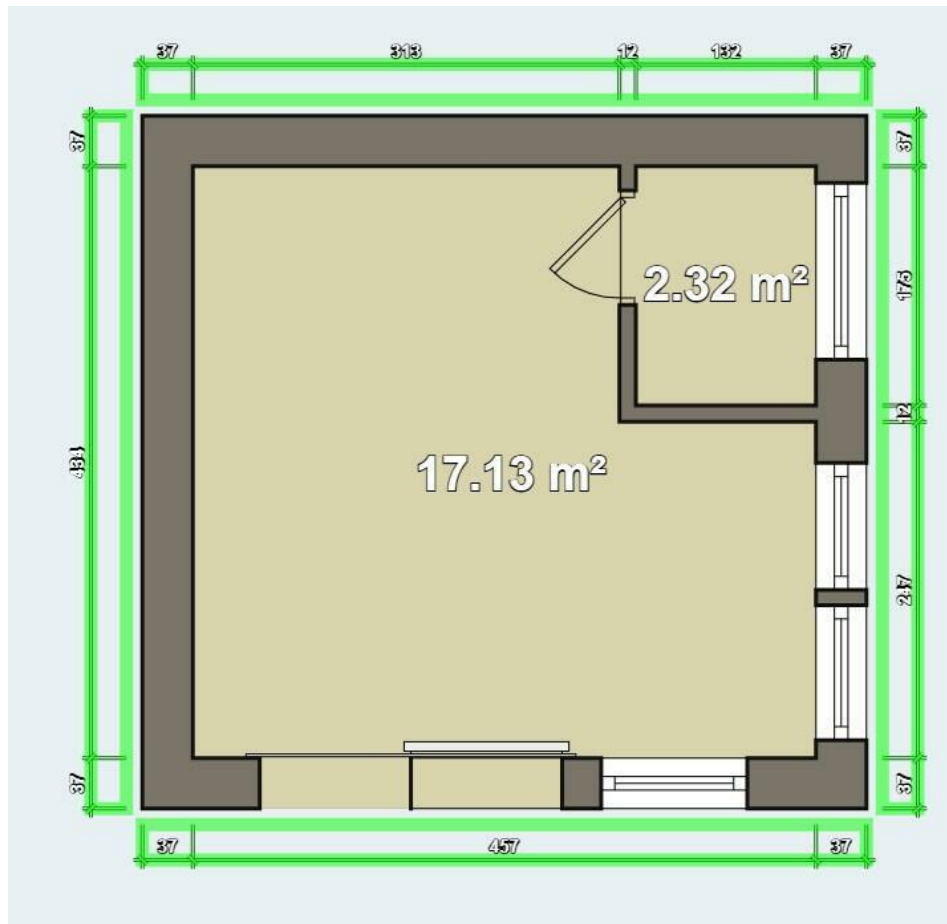
Call us on

**0208 906 2222**

[info@spaceresidential.com](mailto:info@spaceresidential.com)  
[spaceresidential.com](http://spaceresidential.com)

**Council Tax Band**

**Exempt**



Agents Note: Whilst every care has been taken to prepare these particulars, they are for guidance purposes only. All measurements are approximate and are for general guidance purposes only and whilst every care has been taken to ensure their accuracy, they should not be relied upon and potential buyers are advised to recheck the measurements.

**SPACE**  
RESIDENTIAL